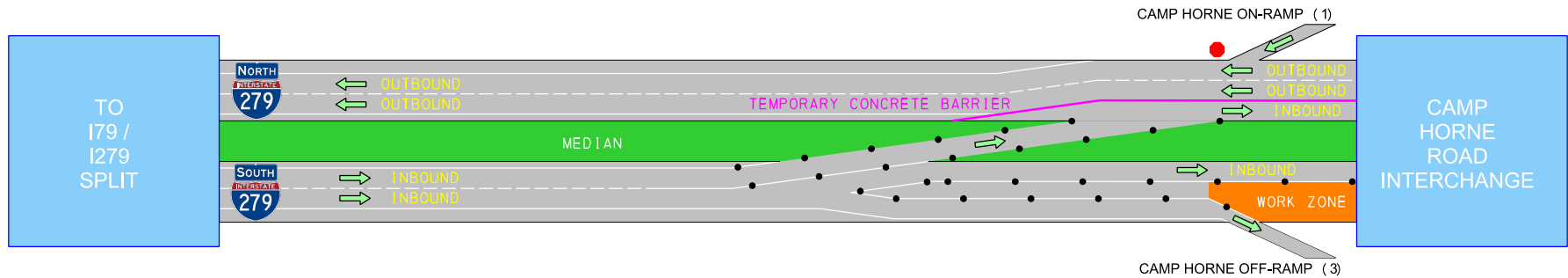


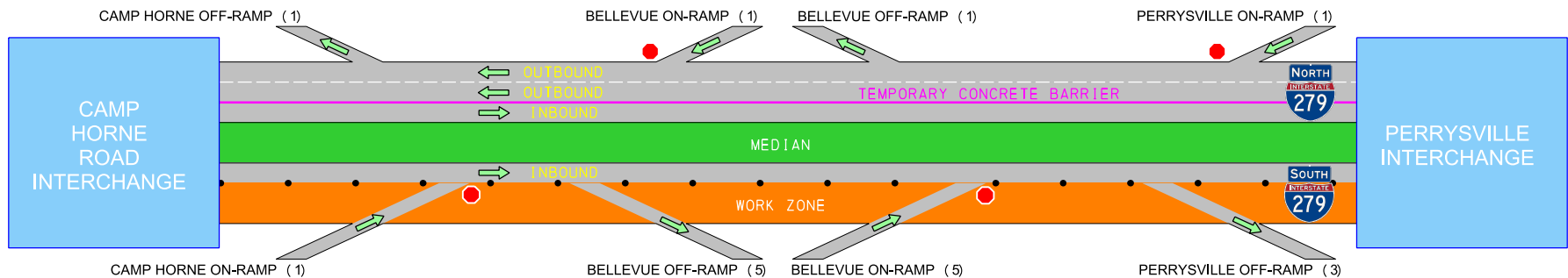
INTERSTATE 279 - PHASE 1 - to Begin April 17, 2017 - Late April / Early May

Concrete patching and pavement overlay of Southbound Lanes of Interstate 279 and associated interchange ramps.

Traffic pattern - 24 hours for duration of Phase 1A



Traffic pattern - 24 hours for duration of Phase 1A



LEGEND

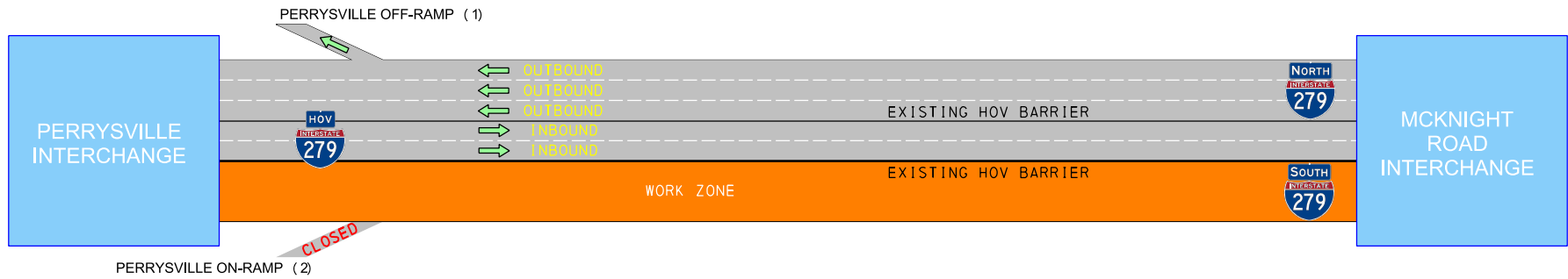
- (1) RAMP TO REMAIN OPEN FOR THE DURATION OF PHASE 1.
- (3) RAMP TO REMAIN OPEN FOR THE DURATION OF PHASE 1, WITH THE EXCEPTION OF LIMITED NIGHTTIME/WEEKEND CLOSURES.
- (5) RAMP TO REMAIN OPEN FOR THE DURATION OF PHASE 1, WITH THE EXCEPTION OF A MAXIMUM OF 1 WEEKEND CLOSURE FROM 10PM FRI TO 6AM MON.
- STOP SIGN

Signed detour routes will be provided during any ramp closure.

INTERSTATE 279 - PHASE 1 - to Begin April 17, 2017 - Late April / Early May

Concrete patching and pavement overlay of Southbound Lanes of Interstate 279 and associated interchange ramps.

Traffic pattern - 24 hours for duration of Phase 1



LEGEND

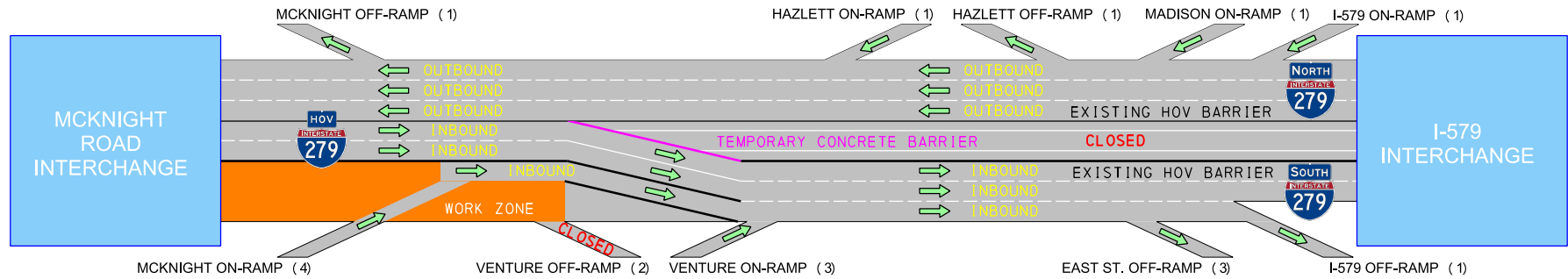
- (1) RAMP TO REMAIN OPEN FOR THE DURATION OF PHASE 1.
- (2) RAMP TO BE CLOSED FOR THE DURATION OF PHASE 1.

Signed detour routes will be provided during any ramp closure.

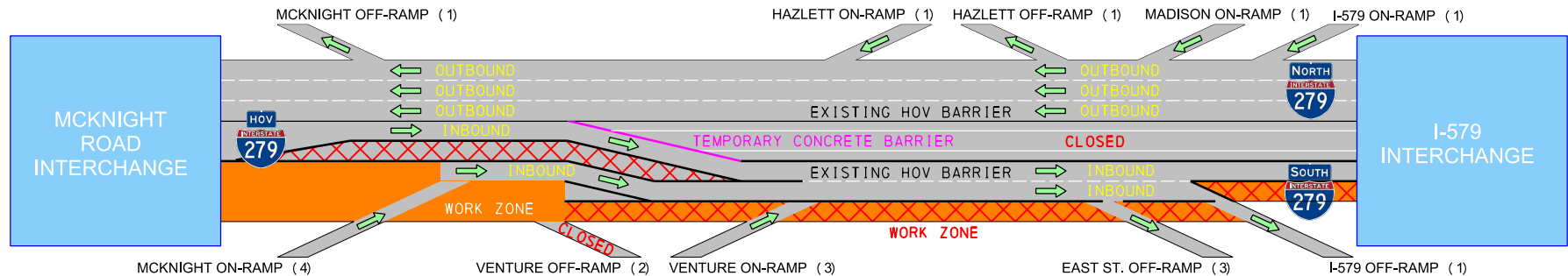
INTERSTATE 279 - PHASE 1 - to Begin April 17, 2017 - Late April / Early May

Concrete patching and pavement overlay of Southbound Lanes of Interstate 279 and associated interchange ramps.

Peak hour traffic pattern - Mon-Fri, 6AM-10AM & 3PM-7PM



Off-peak traffic pattern - Mon-Fri, 12AM-6AM & 7PM-12AM, 24 hours on non-event weekends



LEGEND

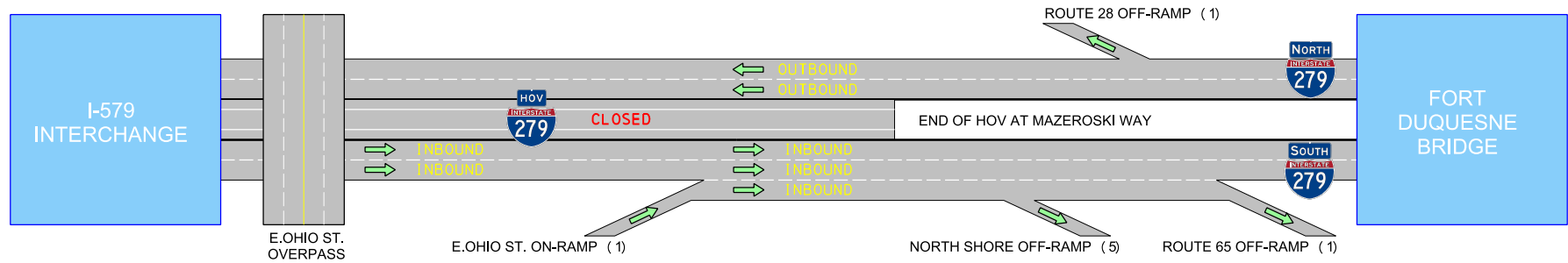
- (1) RAMP TO REMAIN OPEN FOR THE DURATION OF PHASE 1.
- (2) RAMP TO BE CLOSED FOR THE DURATION OF PHASE 1.
- (3) RAMP TO REMAIN OPEN FOR THE DURATION OF PHASE 1, WITH THE EXCEPTION OF LIMITED NIGHTTIME/WEEKEND CLOSURES.
- (4) RAMP TO REMAIN OPEN FOR THE DURATION OF PHASE 1, WITH THE EXCEPTION OF A MAXIMUM OF 3 WEEKEND CLOSURES FROM 10PM FRI TO 6AM MON.
- STOP SIGN

Signed detour routes will be provided during any ramp closure.

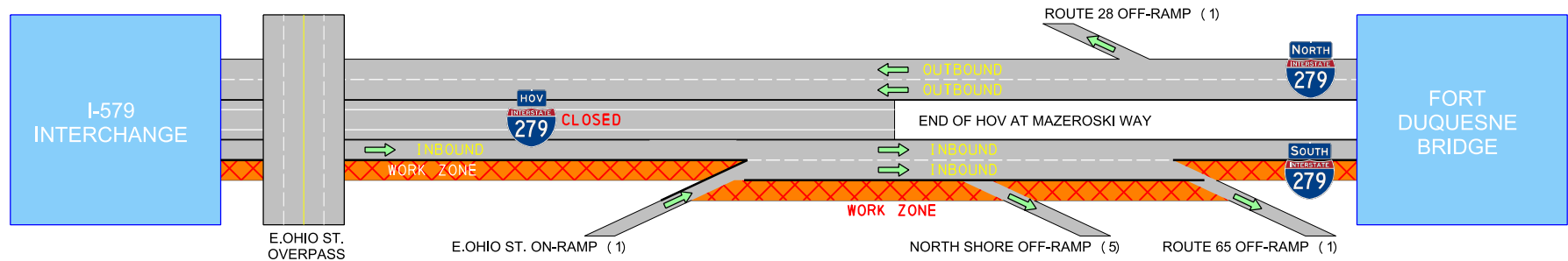
INTERSTATE 279 - PHASE 1 - to Begin April 17, 2017 - Late April / Early May

Concrete patching and pavement overlay of Southbound Lanes of Interstate 279 and associated interchange ramps.

Peak hour traffic pattern - Mon-Fri, 6AM-10AM & 3PM-7PM



Off-peak traffic pattern - Mon-Fri, 12AM-6AM & 7PM-12AM, 24 hours on non-event weekends



LEGEND

- (1) RAMP TO REMAIN OPEN FOR THE DURATION OF PHASE 1.
- (5) RAMP TO REMAIN OPEN FOR THE DURATION OF PHASE 1, WITH THE EXCEPTION OF A MAXIMUM OF 1 WEEKEND CLOSURE FROM 10PM FRI TO 6AM MON.
- STOP SIGN

Signed detour routes will be provided during any ramp closure.